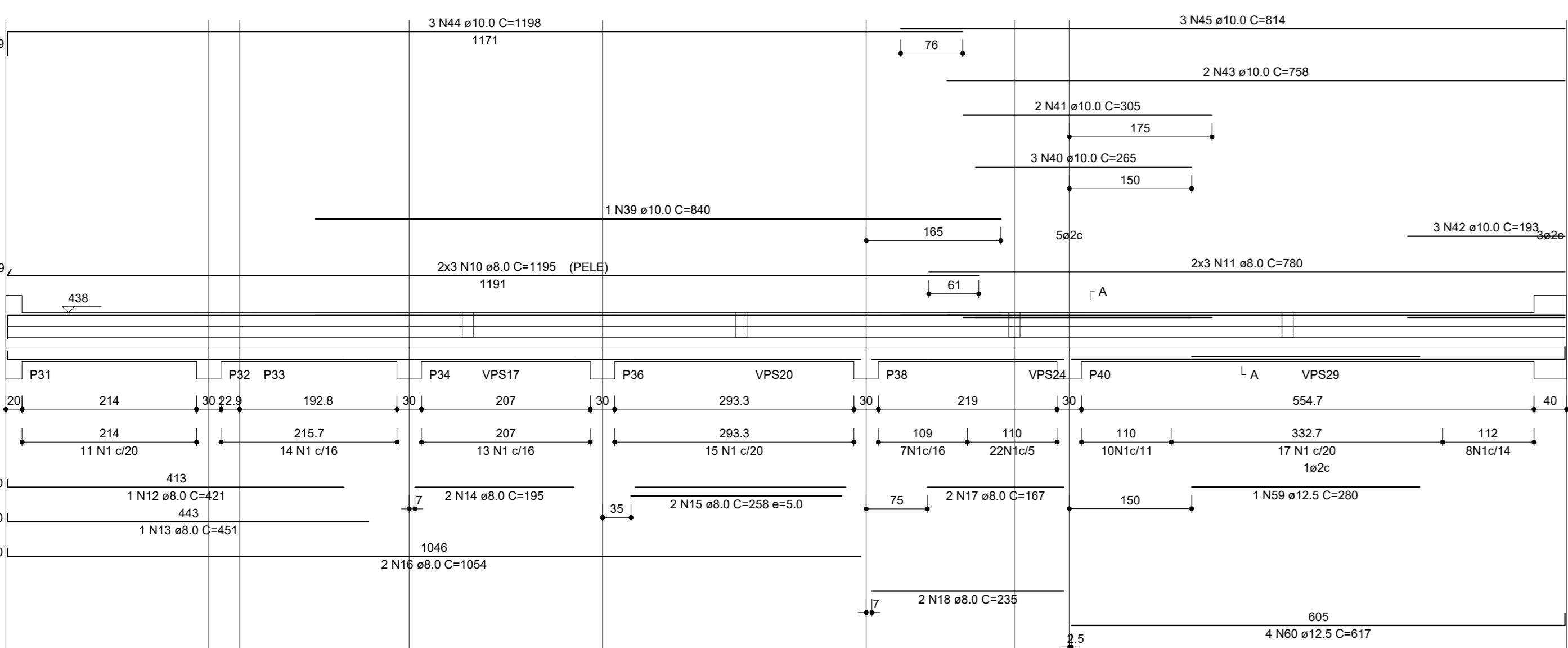
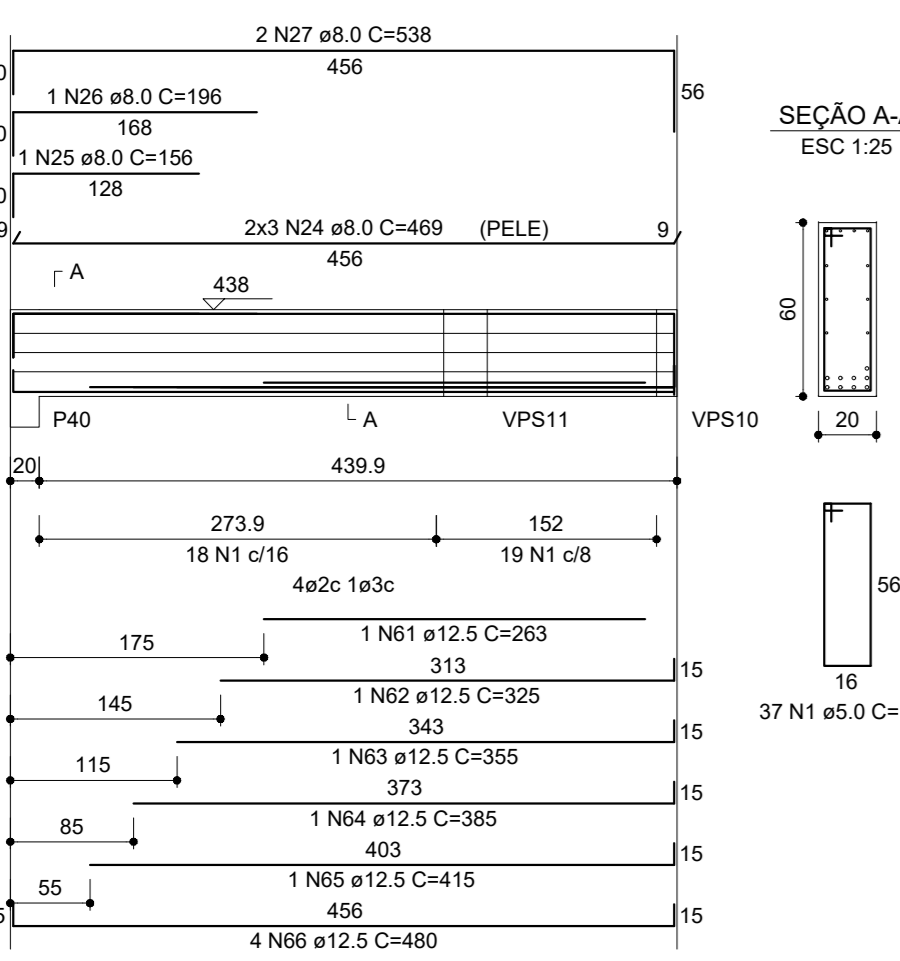


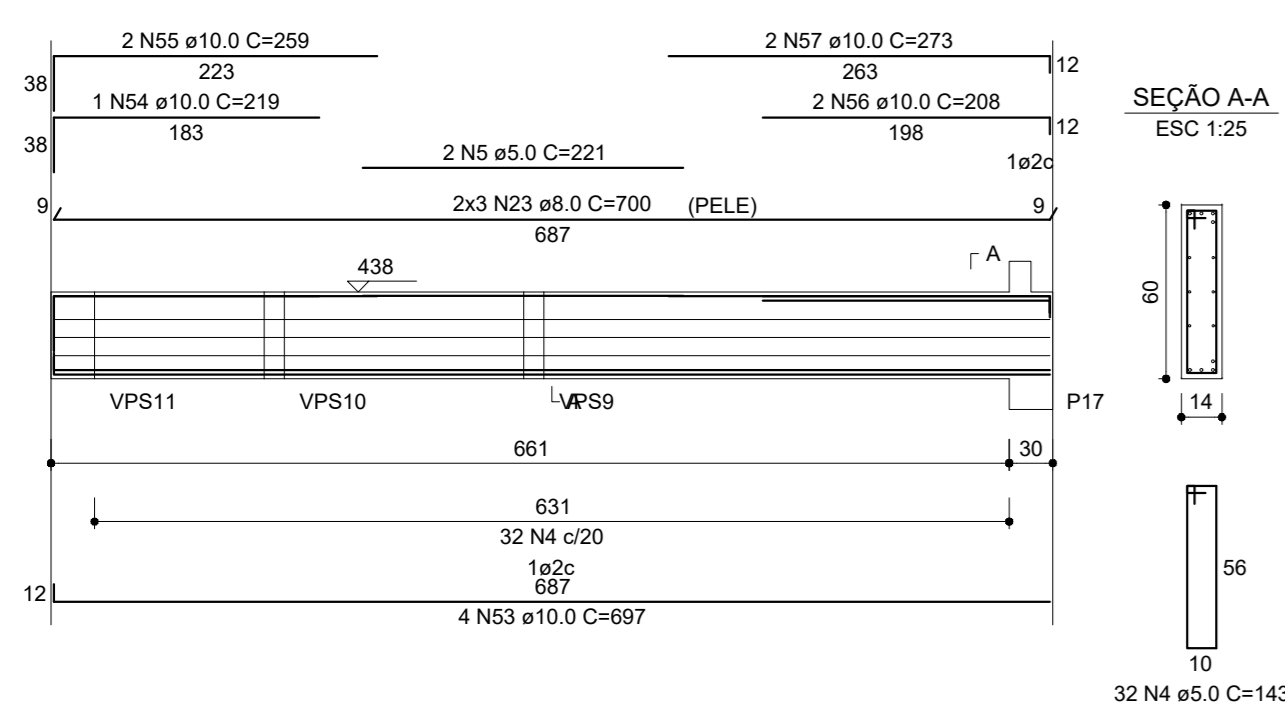
### VPS12



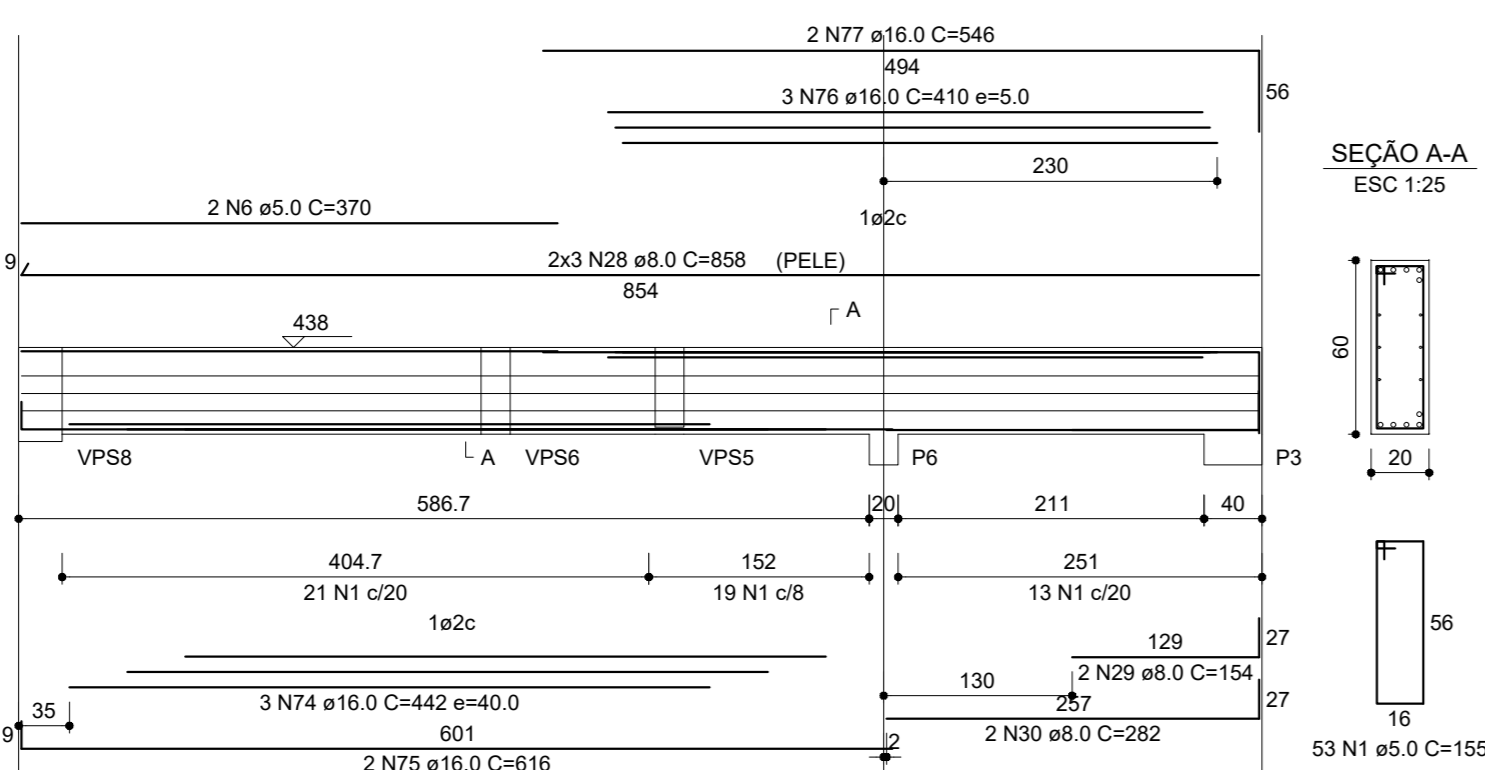
### VPS25



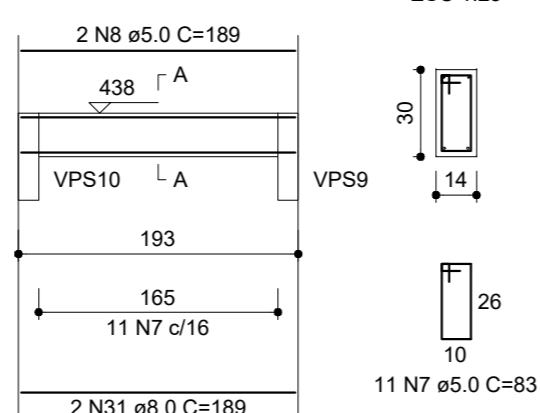
### VPS21



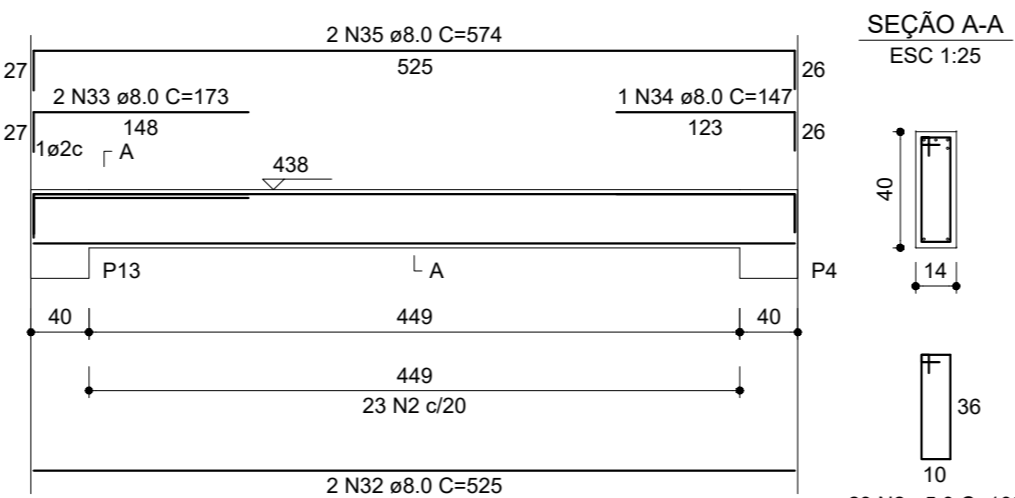
### VPS26



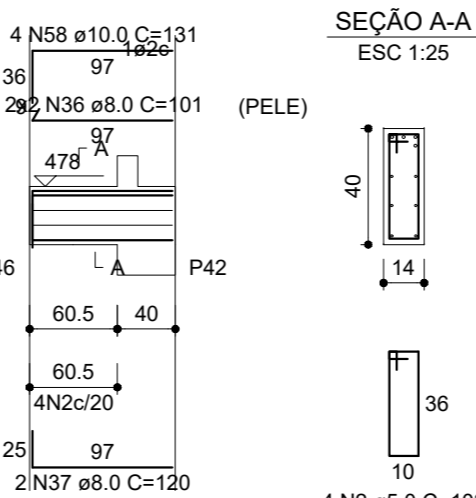
### VPS30



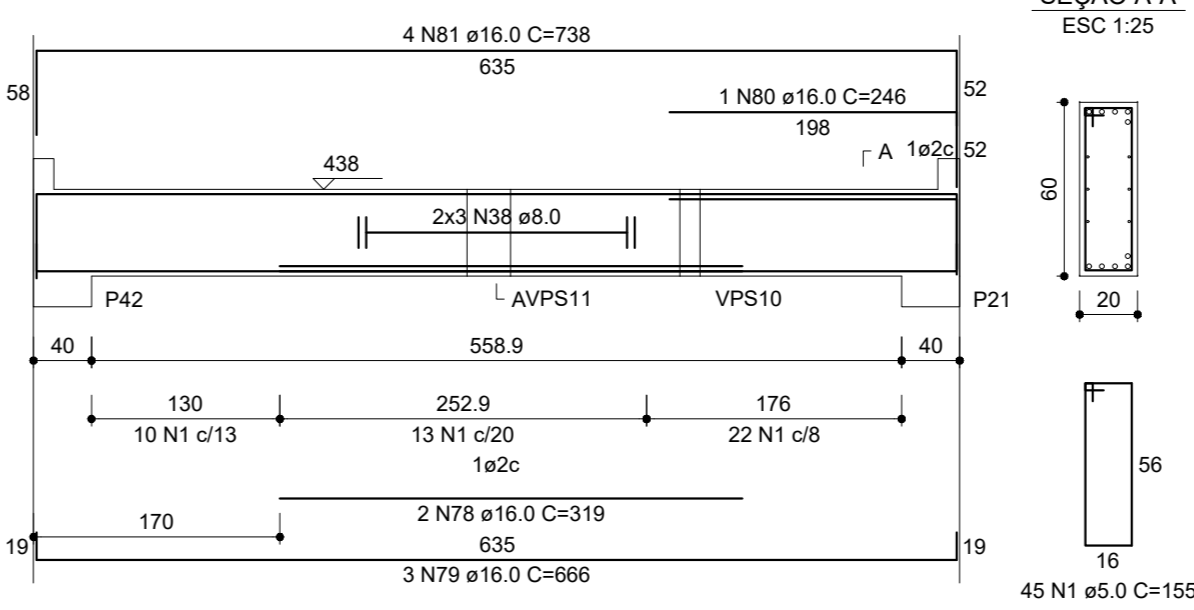
### VPS31



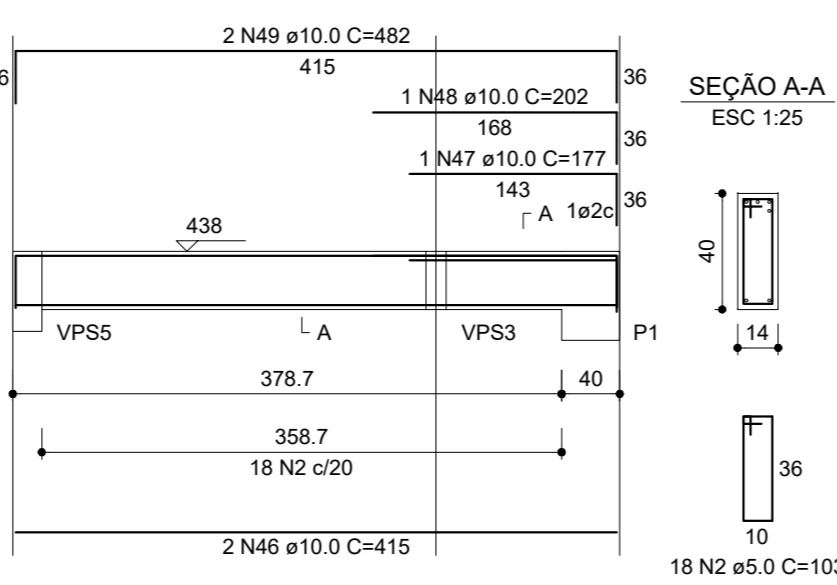
### VPS32



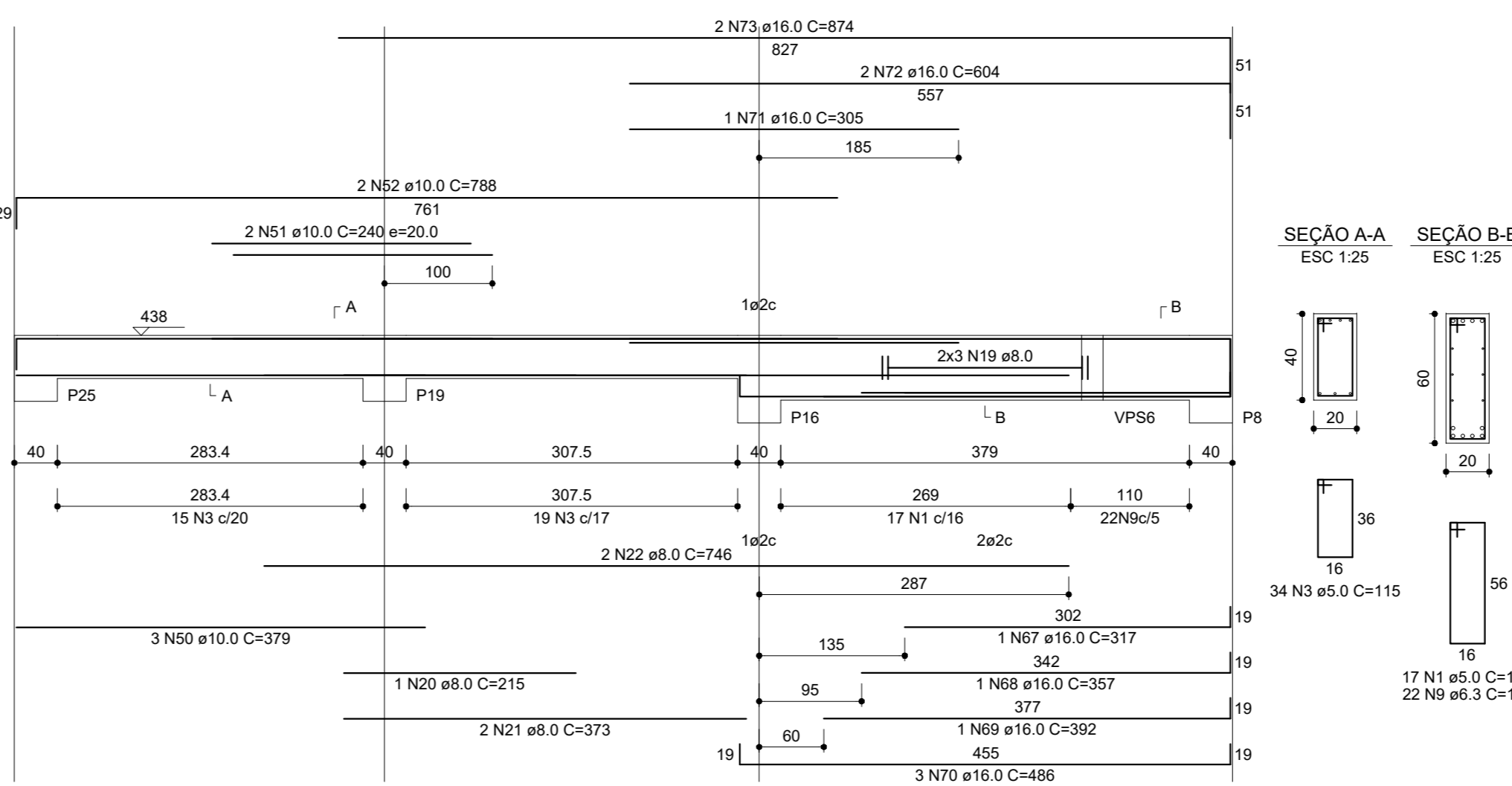
### VPS33



### VPS16



### VPS19



### RELAÇÃO DO AÇO

AÇO	N	DIAM (mm)	QUANT	C.UNIT (cm)	C.TOTAL (cm)
CA50	1	5.0	289	155	44895
	2	5.0	45	103	4635
	3	5.0	34	115	3910
	4	5.0	35	143	4995
	5	5.0	22	221	4862
	6	5.0	2	370	740
	7	5.0	1	83	83
	8	5.0	2	189	378
	9	5.3	22	155	3432
	10	8.0	6	1195	7170
	11	8.0	6	700	4200
	12	8.0	1	421	421
	13	8.0	1	451	451
	14	8.0	2	195	390
	15	8.0	2	255	510
	16	8.0	2	1054	2108
	17	8.0	2	167	334
	18	8.0	2	235	470
	19	8.0	6	com	2700
	20	8.0	1	215	215
	21	8.0	2	375	750
	22	8.0	2	746	1492
	23	8.0	6	700	4200
	24	8.0	6	469	2814
	25	8.0	1	155	155
	26	8.0	1	196	196
	27	8.0	2	635	1270
	28	8.0	2	806	1612
	29	8.0	2	154	308
	30	8.0	2	252	504
	31	8.0	2	189	378
	32	8.0	2	525	1050
	33	8.0	2	173	346
	34	8.0	2	147	294
	35	8.0	2	674	1348
	36	8.0	2	101	202
	37	8.0	2	120	240
	38	8.0	6	com	3810
	39	10.0	1	840	840
	40	10.0	1	265	265
	41	10.0	2	355	710
	42	10.0	3	193	579
	43	10.0	2	758	1516
	44	10.0	3	1198	3594
	45	10.0	3	814	2442
	46	10.0	2	415	830
	47	10.0	1	177	177
	48	10.0	2	403	806
	49	10.0	2	452	904
	50	10.0	2	240	480
	51	10.0	2	789	1578
	52	10.0	2	697	1394
	53	10.0	1	219	219
	54	10.0	2	259	518
	55	10.0	2	208	416
	56	10.0	2	273	546
	57	10.0	4	131	524
	58	12.5	1	280	280
	59	12.5	4	617	2468
	60	12.5	1	352	352
	61	12.5	1	355	355
	62	12.5	1	355	355
	63	12.5	1	355	355
	64	12.5	1	355	355
	65	12.5	1	415	415
	66	12.5	4	450	1800
	67	16.0	1	317	317
	68	16.0	1	357	357
	69	16.0	1	362	362
	70	16.0	3	485	1455
	71	16.0	1	365	365
	72	16.0	2	604	1208
	73	16.0	2	614	1228
	74	16.0	2	442	884
	75	16.0	2	616	1232
	76	16.0	3	410	1230
	77	16.0	2	440	880
	78	16.0	2	510	1020
	79	16.0	3	666	1998
	80	16.0	1	246	246
	81	16.0	4	738	2952

### RESUMO DO AÇO

AÇO	DIAM (mm)	C.TOTAL (m)	PESO + 10% (kg)
CA50	5.3	34.3	9.2
	8.0	437.1	189.7
	10.0	207.5	140.7
	12.5	64.1	67.9
	16.0	165	285.5
CA50	5.0	572.9	97.1

PESO TOTAL

CA50 694.1

CA50 97.1

Volume de concreto (C-25) = 6.97 m³

Área de forma = 87.78 m²

### PROJETO COMPLETO ESTRUTURAL

PROPRIETÁRIO  
CÂMARA MUNICIPAL DE ITAPEVA  
CHP/1-  
19.053.594/0001-27

ENDEREÇO  
RUA PRESIDENTE KENNEDY, S/N - LOT. JARDIM MONTEIRO  
ITAPEVA - MG

### DETALHES

VIGAS DO 1º PAVIMENTO

PROPRIETÁRIO  
CÁSSIO CÉSAR ORSI JUNHO  
CREA: 102036/D - MG

ESCALA:  
INDICADA  
DATA:  
08/10/2021  
FOLHA:  
7/15

**ESTRUTURAL**